

# KITCHENER FACILITY

## ALIGN TO BUILD BETTER



The Zekelman Industries modular building factory in Kitchener, ON, develops and builds high-quality, cost-effective affordable housing for the local community. Since the factory opened in March 2019, we've completed thousands of sq. ft. of housing for families, professionals and other Ontarians.

### OUR LOCAL IMPACT

Fiscal Year 2022

**125,000** sq. ft.  
of new housing produced

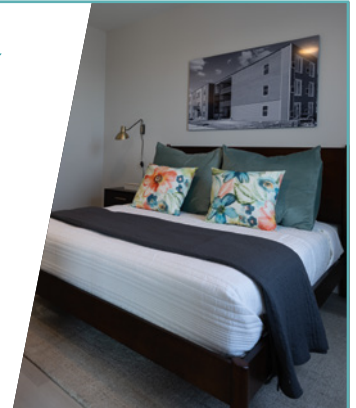
**149**  
tradespeople on the  
ground daily



### TYPICAL COMMUNITY

**300**  
average units per  
planned community

**\$70 MILLION**  
construction value



### OUTPUT

**2,450**

sq. ft. per week

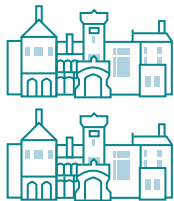
**10,600**

sq. ft. per month

**127,400**

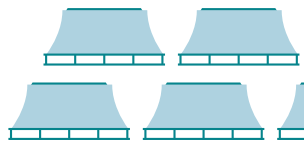
sq. ft. per year

Every year, we produce the equivalent of:



**2**

Casa Lomas



**4.2**

Roy Thomson Halls



**6.4**

Gooderham  
Buildings



### PLANNED DEVELOPMENTS

#### 1 FUZE LUCAN

Units: 90  
Modules: 155

#### 2 FUZE WOODSTOCK

Units: 103  
Modules: 191

#### 3 FUZE PORT ELGIN

Units: 332  
Modules: 584

### COMPLETED DEVELOPMENTS

#### 4 GEM RESIDENCE

Units: 66  
Modules: 340

### OUR FACILITY

**March 2019**

established

**174**

employees

**250,000** sq. ft.

factory floor

**16.6** acres

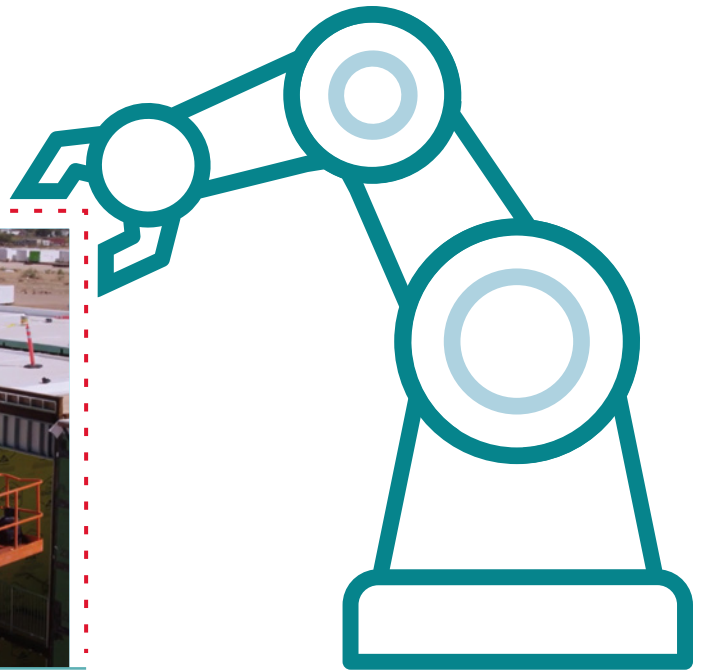
total campus



# Z MODULAR

## ABOUT US

Z Modular, a division of Zekelman Industries, is a fully integrated developer of high-quality, affordable multi-family housing. Our revolutionary off-site modular construction system allows us to build better and more precisely.



## WHAT MAKES US UNIQUE

We're committed to both using American-made products and building sustainably inside the factory and at the property site. Our standardized production process allows us to reduce risks, eliminate waste and build high-quality buildings.



## WHY Z MODULAR

Our proven process expedites planning, reduces construction time, guarantees precision and ensures rapid installation. Plus, our portfolio of customizable, ready-to-build designs allows us to complete your projects in less time.



## OUR FACILITIES

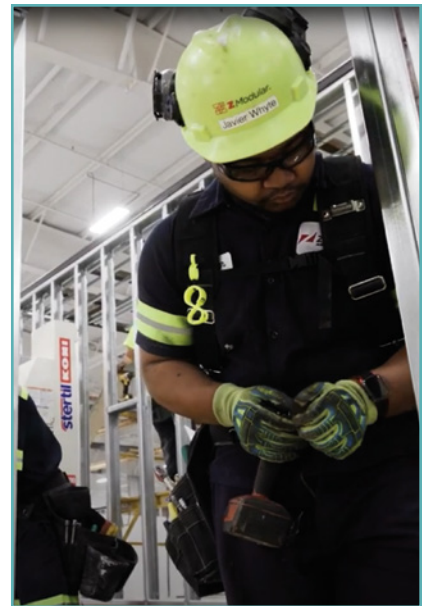
- Birmingham, AL
- Chandler, AZ
- Killeen, TX
- Kitchener, ON



## MARKETING AND PR CONTACTS

**Rick Sebok**  
rick.sebok@zekelman.com

**Sam Zekelman**  
sam.zekelman@zekelman.com



ZMO-041825



191 North Wacker Drive  
Suite 2100  
Chicago, IL 60606  
P 800.733.5606

info@z-modular.com  
z-modular.com  
Follow us on Twitter:  
@Z\_Modular

 **Z Modular**  
A ZEKELMAN COMPANY